



# FEATURES

- Clear & informative graphic display
- Highest grade HEPA and carbon technology
- Automatic electronic flow control - maintains a constant extraction rate even as the filter blocks
- Gas and particle sensors to warn the operator
- Up to 2 large hoods

## SPECIFICATIONS

<b>Voltage</b>	120v	230v
<b>Part Number</b>	080470D	080465D
Wattage	0.36kW	0.36kW
Frequency	50Hz / 60Hz	50Hz / 60Hz
Cabinet Height	720mm	720mm
Cabinet Width	445mm	455mm
Cabinet Depth	610mm	610mm
Cabinet Weight	55kg	55kg
Sound Level	<60dBa	<60dBa
Airflow	645m <sup>3</sup> /h	645m <sup>3</sup> /h

## INCLUDED AS STANDARD...

### FILTERS



**Main Filter**  
Code  
113505

**Description**  
HEPA/Chemical



**Pre-filter**  
Code  
200025

**Description**  
F5 Pad

Find out more:

 [www.purex.co.uk](http://www.purex.co.uk)

 [purex@purex.co.uk](mailto:purex@purex.co.uk)

 +44 (0)1405 746030

## CONNECTION KIT

*Connection kit is included  
see overleaf for options*

# OPTIONS

## Main Filter

Code:	Description:
113505H	HEPA/Chemical (Hydrophobic)
113579	HEPA/Twin Chemical
113668	HEPA/Twin Chemical
113512	HEPA/Chemical (Cleanroom)
113669	HEPA/Chemical (Cleanroom)
113508	Chemical
113809	HEPA
113513	Solvent Lock

## Main Filter

Code:	Description:
113662	Chemical Special
113505P	Chemical Special
113531	Pleated Bag

## Connection Kits

### Included



The 650 machine is suitable for either single arm or dual arm.

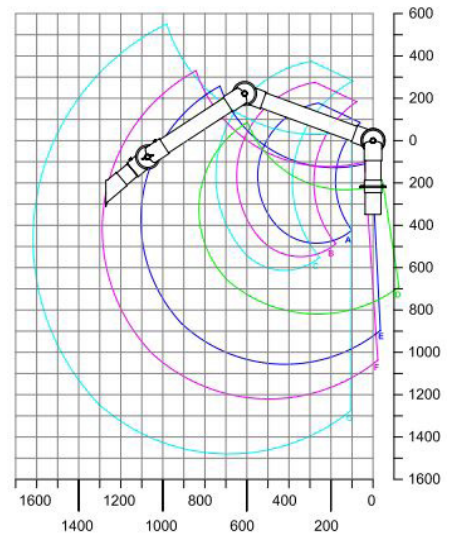
The machine is high in mobility due to its castors and the 75mm multi position arm; meaning the machine can be moved from station to station as and when required. The arm has a working range of between 550mm and 1620mm.

The large hood area of 420mm x 320mm gives the operator ample space to work.

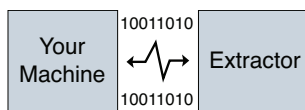
### Optional Extra

Upgrade your 650 machine with an additional arm!

**Code:**  
Arm - 120197  
Hood - 840116



## Interfacing



Interfacing can remotely start the Purex machine when the connected machine starts.

Interfacing can also warn the connected machine when the Purex machine is in alarm.

*Take a look through our Interfacing Guide to see our extensive range of options*



Purex International Limited  
QWP House, Island Drive  
Capitol Park, Thorne  
Doncaster, UK  
DN8 5UE